



Enhancing Research and Innovation through #ERAHubs



ERA FABRIC

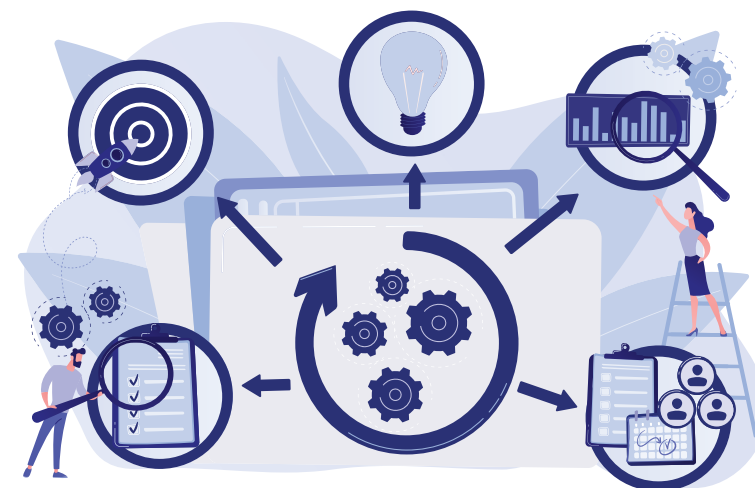
ERA_FABRIC, funded by **Horizon Europe**, aims to create **ERA Hubs** that foster collaboration and innovation across European regions, integrating research, innovation and policy.

The project focuses on analyzing challenges, exploring solutions, and implementing strategies to drive economic growth and technological advancement.

HORIZON
europe

OBJECTIVES OF ERA Hubs

- **Translate research results into the economy:** Bridging the gap between research outcomes and practical applications.
- **Strengthen innovation ecosystems:** Building robust networks of stakeholders to support innovation.
- **Promote regional innovation and connectivity:** Enhancing connections between different regions to foster collaborative innovation.
- **Encourage creation of innovation-intensive sectors:** Supporting sectors that heavily rely on continuous innovation.
- **Enhance technology profiles and knowledge transfer:** Improving technological capabilities and ensuring effective knowledge dissemination.





CASE STUDY

ERA Hubs, though complex to define, are examined through various case studies from across Europe. These studies highlight key elements such as goals, types of partners, roles of public administration, and the balance between public and private sectors. Learning from real-world examples helps create better tools for

decision-makers to understand and manage these hubs within European policies.

GOVERNANCE AND POLICY CONTEXT

- **Directionality:** Aligning public and private stakeholders around shared goals (e.g., Green Deal, digital transition).
- **Multi-Level Governance:** Engaging regional, national, and European levels for comprehensive collaboration.
- **Horizon Integration:** Facilitating cross-border collaboration and knowledge exchange.
- **Holistic Approach:** Promoting co-creation and joint ownership among all stakeholders.



STAY CONNECTED:

JUST CLICK ON ICON



WWW.ERAFABRIC.EU



ERA_FABRIC



ERA_FABRIC



SUBSCRIBE TO
ERA_LETTER

**Project 101094821 ERA_FABRIC -
HORIZON-WIDERA-2022_ERA-01**

Views and opinions expressed are however those of the author(s) only and do not necessarily reflect those of the European Union or European Research Agency. Neither the European Union nor the granting authority can be held responsible for them.

